

TANCO AUTOWRAP SYSTEMS

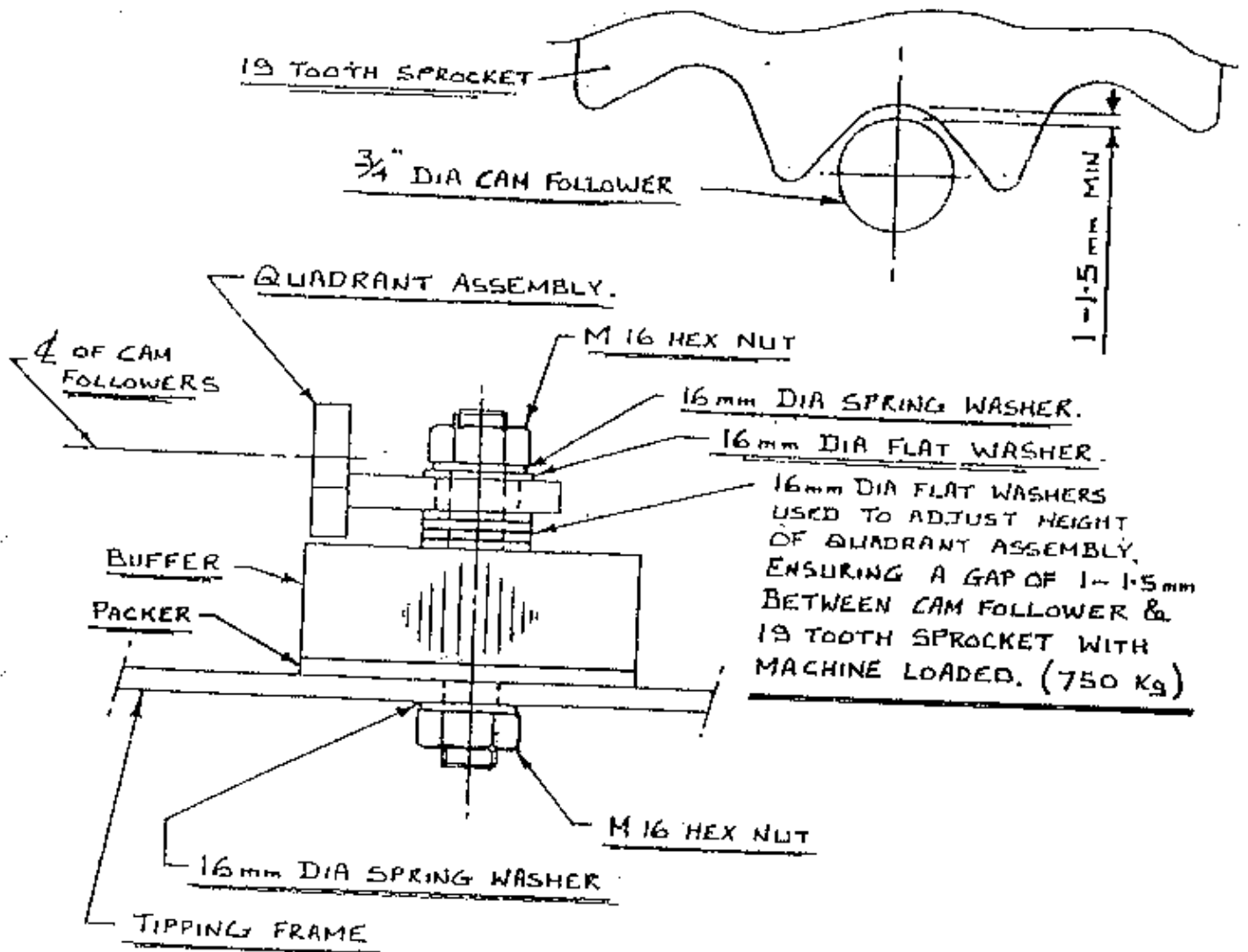
200 & 300 Model (1991)

OPERATORS HANDBOOK

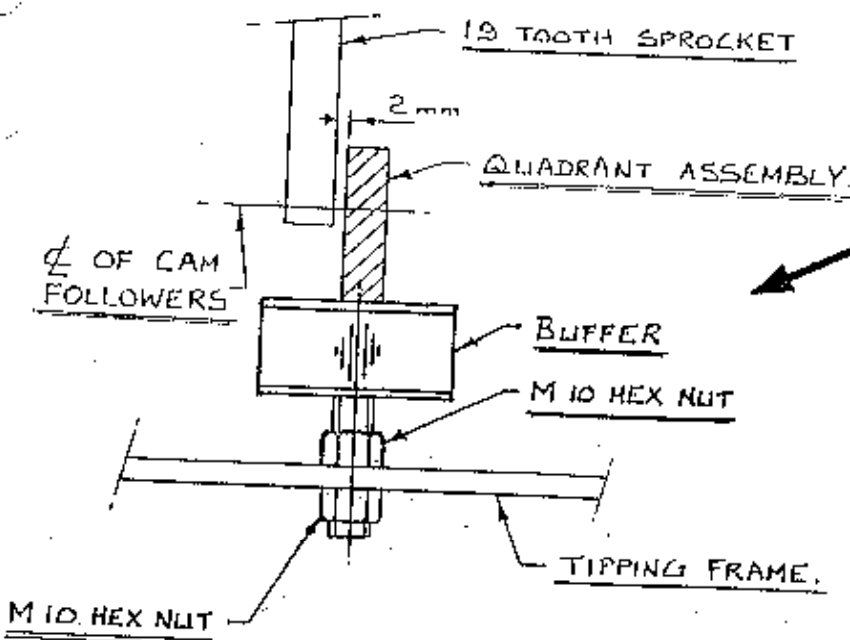
AND

PARTS LIST

WD64-MIT91



TANCO AUTO WRAP. 1991
INDEX SHAFT. SPROCKET CLEARANCE ADJUSTMENT.

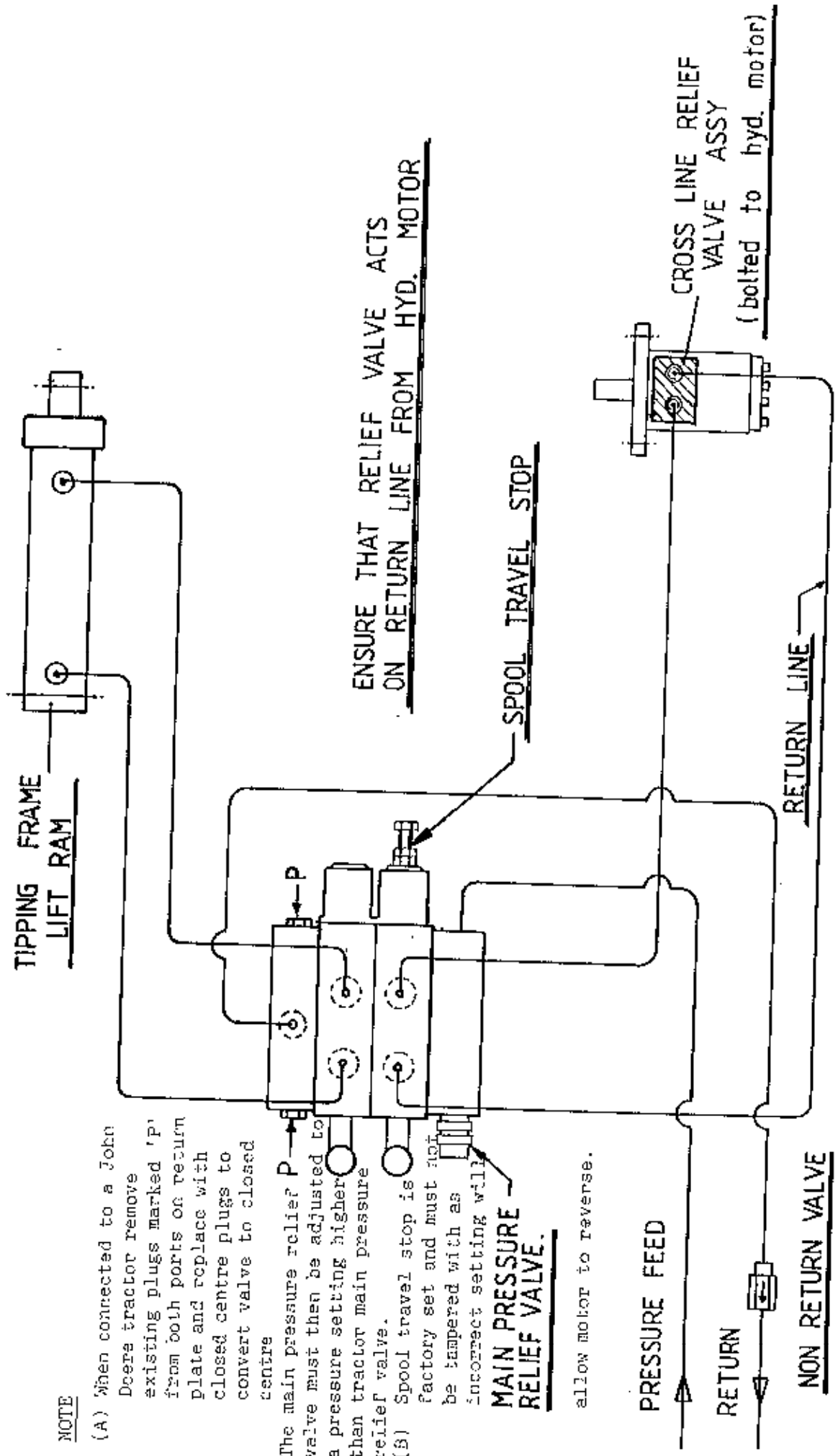


NOTE:

AFTER SETTING QUADRANT POSITION ADJUST CENTRE BUFFER HEIGHT UNTIL IT TOUCHES LOWER EDGE OF QUADRANT ASSEMBLY AS SHOWN.

TANCO AUTOWRAP 200 MODEL (3pt LINKAGE) 1991

HYDRAULIC CIRCUIT (DIN)



NOTE

(A) When connected to a John Deere tractor remove existing plugs marked 'P' from both ports on return plate and replace with closed centre plugs to convert valve to closed centre

The main pressure relief P valve must then be adjusted to a pressure setting higher than tractor main pressure relief valve.

(B) Spool travel stop is factory set and must not be tampered with as incorrect setting will

MAIN PRESSURE RELIEF VALVE.

allow motor to reverse.

ENSURE THAT RELIEF VALVE ACTS ON RETURN LINE FROM HYD. MOTOR

SPOOL TRAVEL STOP

PRESSURE FEED

RETURN

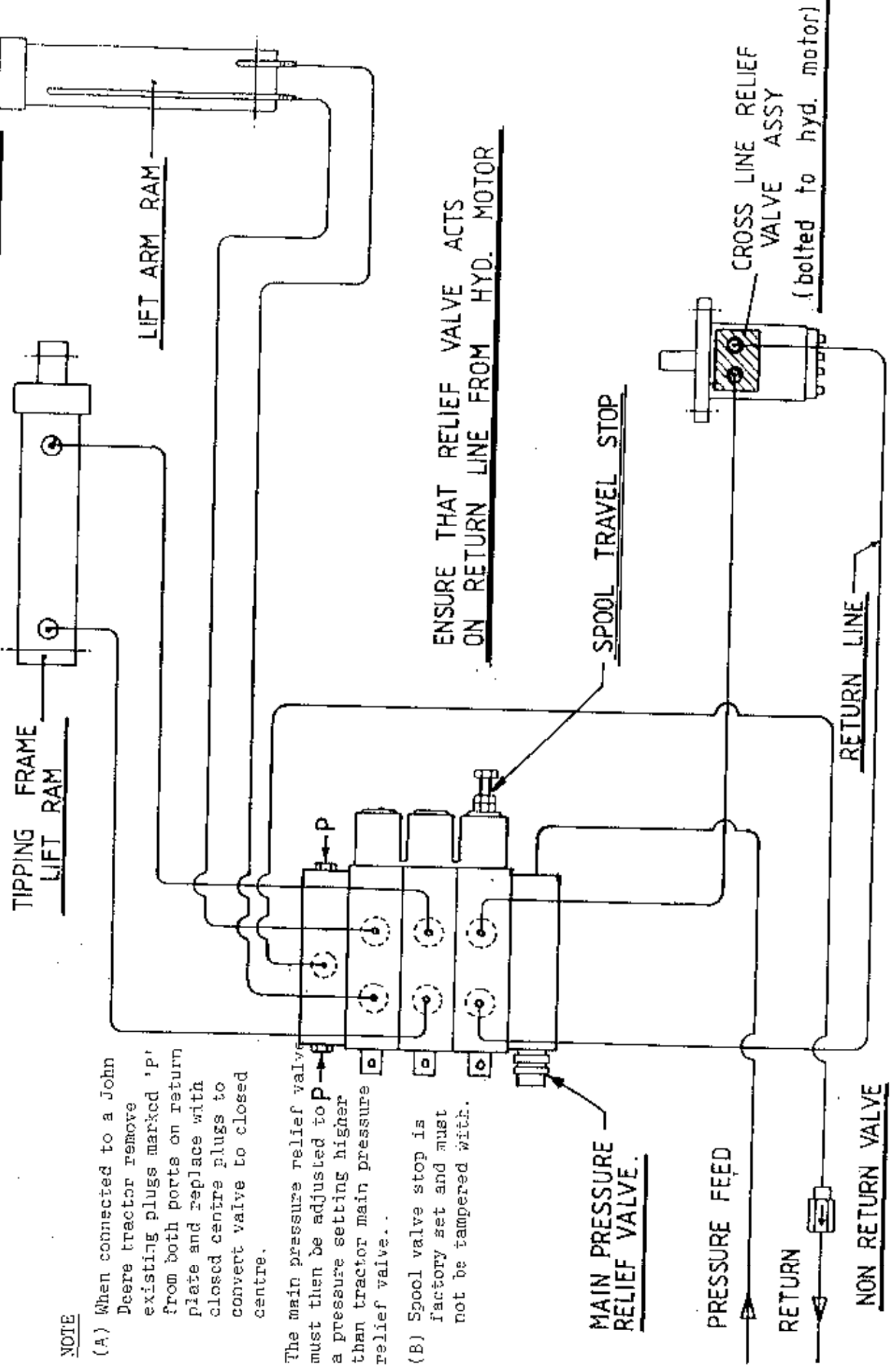
NON RETURN VALVE

CROSS LINE RELIEF VALVE ASSY

(bolted to hyd. motor)

RETURN LINE

TANCO AUTOWRAP 300 400 & 500 MODEL (TRAILED) HYD. CIRCUIT (DIN) (1991)



NOTE

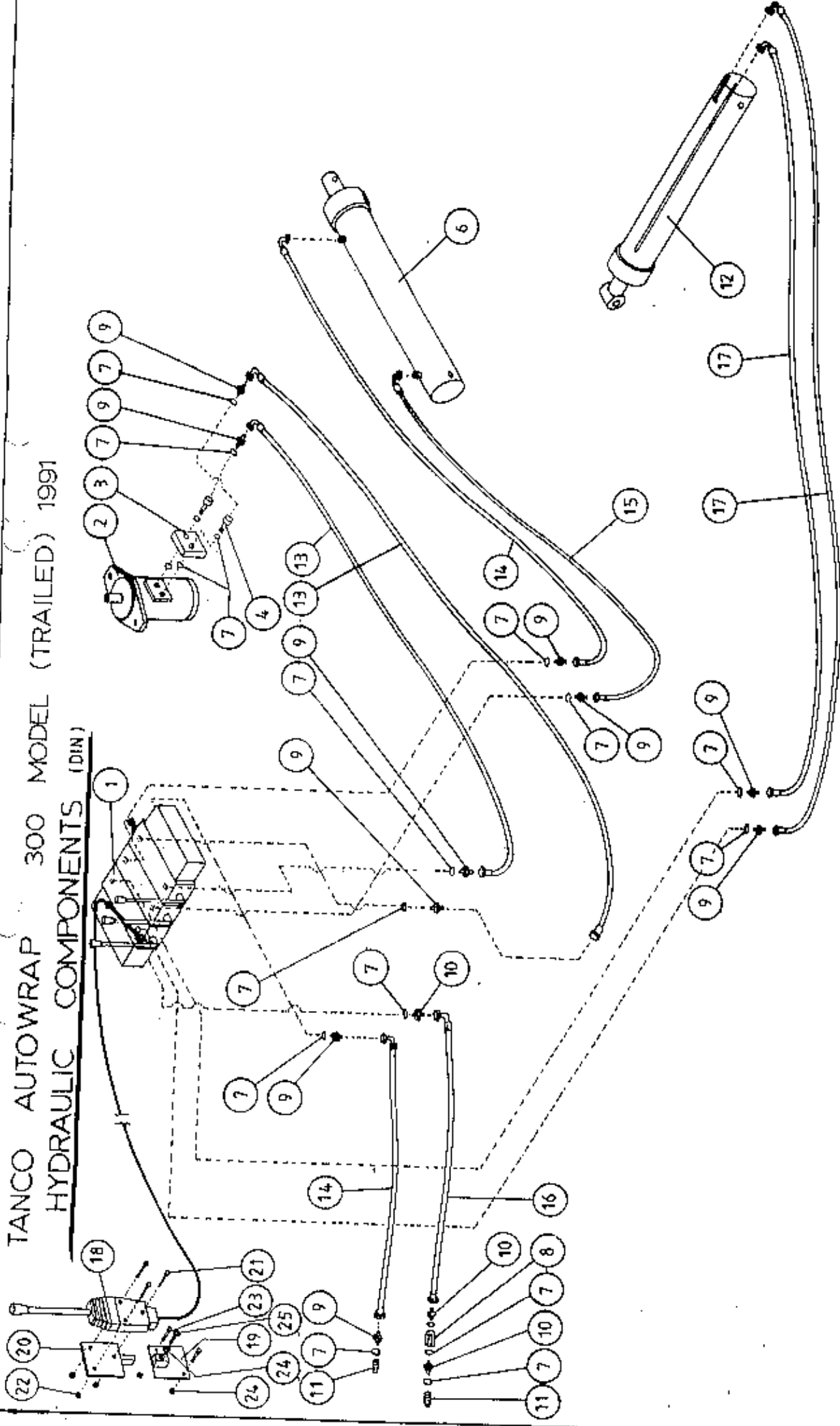
(A) When connected to a John Deere tractor remove existing plugs marked 'P' from both ports on return plate and replace with closed centre plugs to convert valve to closed centre.

The main pressure relief valve must then be adjusted to **P** a pressure setting higher than tractor main pressure relief valve.

(B) Spool valve stop is factory set and must not be tampered with.

ENSURE THAT RELIEF VALVE ACTS ON RETURN LINE FROM HYD. MOTOR

TANCO AUTOWRAP 300 MODEL (TRAILED) 1991
 HYDRAULIC COMPONENTS (DIN)

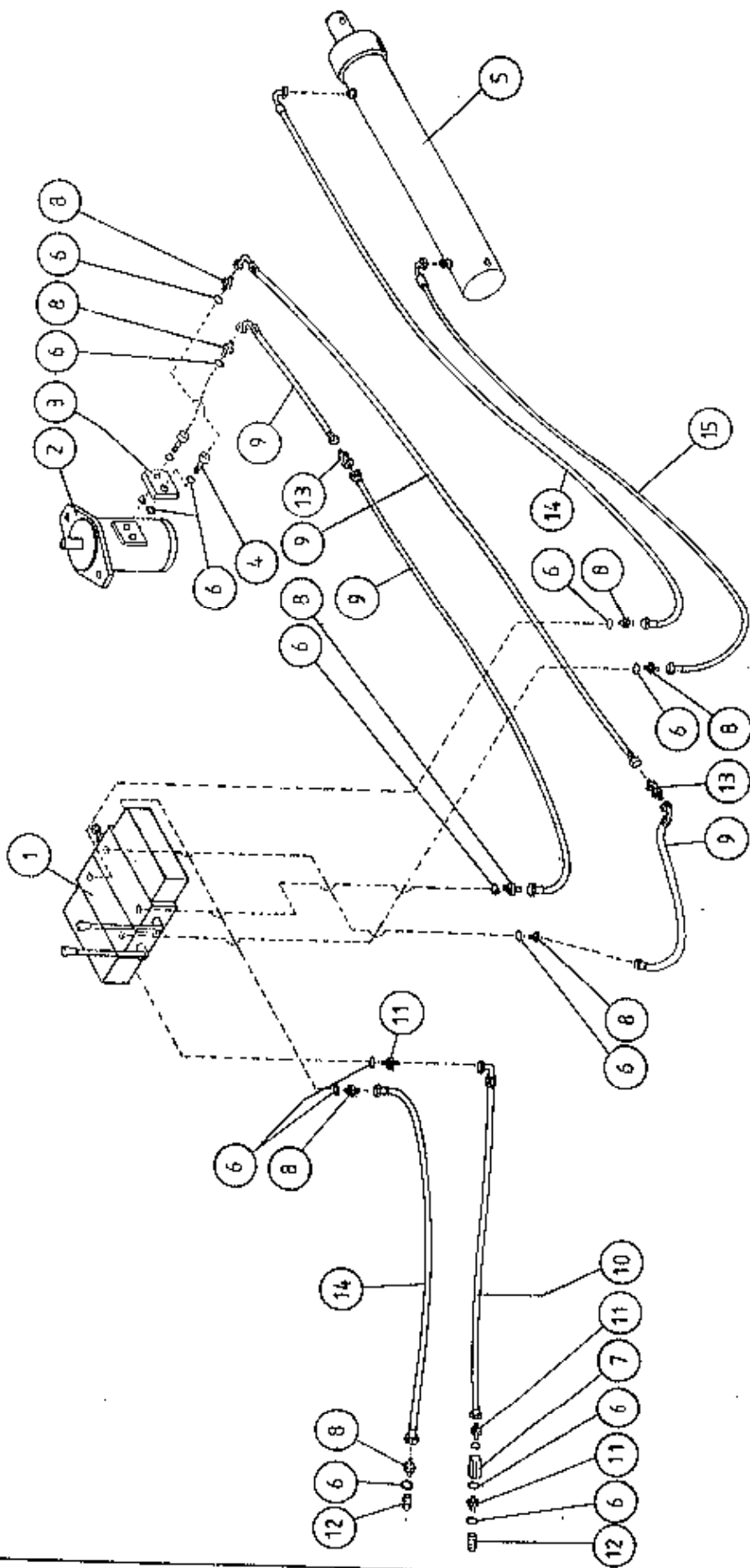


PANCO AUTOWRAP 300 MODEL (TRAILED) 1991

HYDRAULIC COMPONENTS (DIN)

PARTS LIST

<u>ITEM NO.</u>	<u>DESCRIPTION</u>	<u>QTY.</u>	<u>PART NO.</u>	<u>CODE NO.</u>
1.	3 BANK SPOOL VALVE (DIN) C/W LEVERS	1		Z01-03-018D
2.	HYDRAULIC MOTOR (C.I.)	1		Z01-02-AR75
3.	CROSS LINE RELIEF VALVE	1		Z01-03-002
4.	1/2" BSP BOTTOM BANJO BOLT (SPECIAL)	2		
5.	M10 LOCKNUT	2		Z23-10
6.	HYD. RAM (FOR TIPPING FRAME)	1		Z01-01-AR637
7.	1/2" DOWTY WASHER	18		Z01-04-03
8.	1/2" NON RETURN VALVE	1		Z01-03-017
9.	1/2" x 3/8" ADAPTOR	10		Z01-06-06-08
10.	1/2" x 1/2" ADAPTOR	3		Z01-06-08-08
11.	1/2" MALE END Q/R COUPLING	2		Z01-15-081
12.	HYD. RAM (FOR LIFT ARM)	1		Z01-01-AW
13.	96" ST/90 3/8" D/W HOSE	2		Z38-R2-96-S9
14.	84" ST/90 3/8" D/W HOSE	2		Z38-R2-84-S9
15.	72" ST/90 3/8" D/W HOSE	1		Z38-R2-72-S9
16.	84" ST/90 1/2" S/W HOSE	1		Z12-R1-84-S9
17.	120" ST/90 3/8" D/W HOSE	2		Z38-R2-120S9
18.	3 1/2" METER CABLE C/W ACTUATOR & BULKHEAD END	1		Z004-03-0061 Z004-03-009
19.	ACTUATOR MTG. BRACKET BOTTOM HALF	1	B/R 143 A	
20.	ACTUATOR MTG. BRACKET TOP HALF	1	B/R 144 A	
21.	M8 HEX HD. BOLTS x 65mm LONG	3		Z26-048B
22.	M8 LOCKNUTS	3		Z23-08
23.	M10 HEX HD. SETS x 40mm LONG	2		Z26-064S
24.	M12 HEX HD. SET X 30mm LONG	1		
25.	M12 HEX NUT	1		



TANCO AUTOWRAP 200 MODEL (3 pt. LINKAGE) 1991
HYDRAULIC COMPONENTS (DIN)

TANCO AUTOWRAP 200 MODEL (3pt LINKAGE) 1991

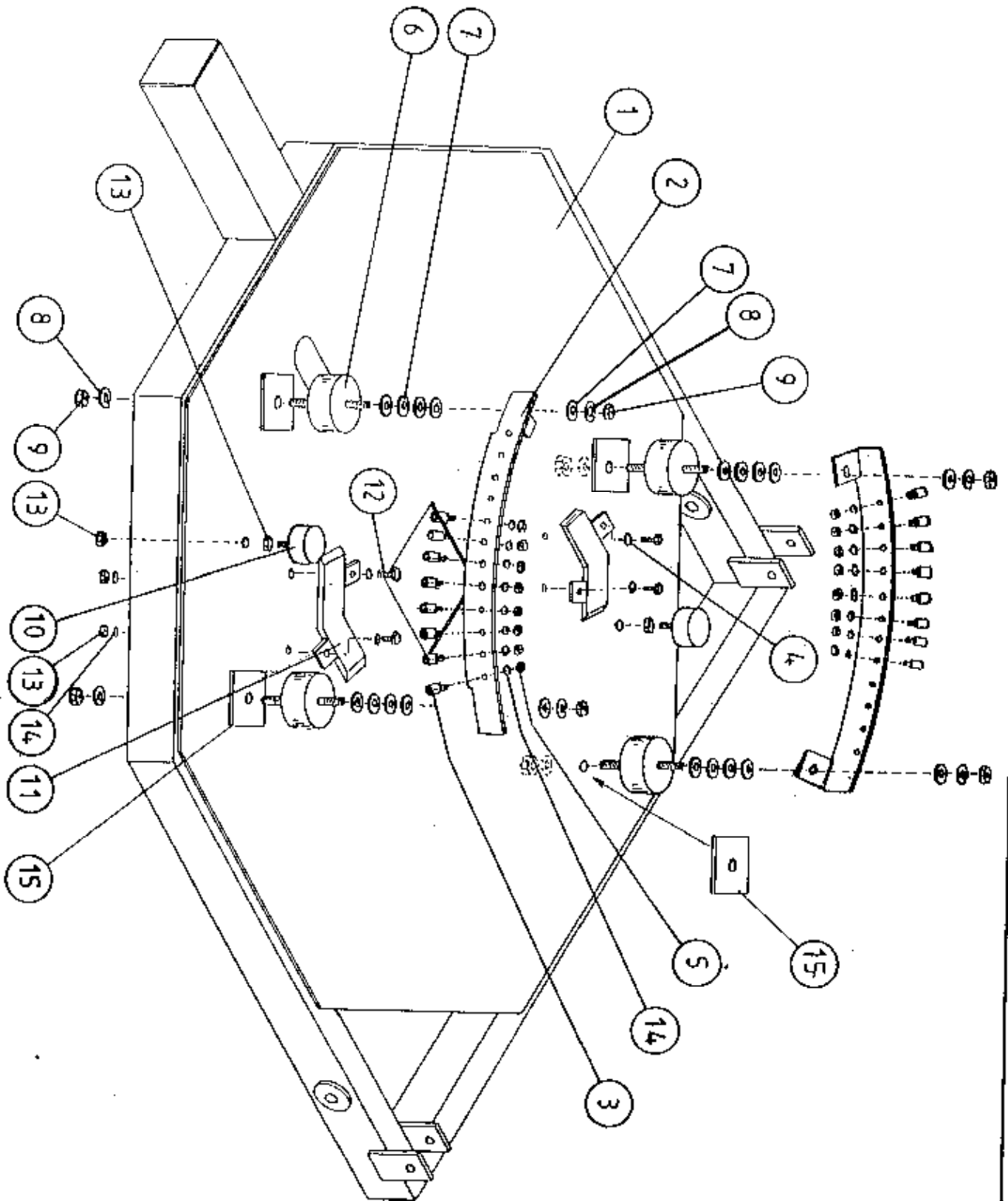
PARTS LIST

HYDRAULIC COMPONENTS (DIN)

<u>ITEM NO.</u>	<u>DESCRIPTION</u>	<u>QTY.</u>	<u>PART NO.</u>	<u>CODE NO.</u>
1.	2 BANK SPOOL VALVE (DIN) C/W LEVERS	1		
2.	HYDRAULIC MOTOR (C.L.)	1		Z01-02-AR75
3.	CROSS LINE RELIEF VALVE	1		Z01-03-001
4.	1/2" BSP BOTTOM BANJO BOLT (SPECIAL)	2		
5.	HYD. RAM (FOR TIPPING FRAME)	1		Z01-01-AR68
6.	1/2" DOWTY WASHER	16		Z01-04-03
7.	1/2" NON RETURN VALVE	1		Z01-03-027
8.	1/2" x 3/8" ADAPTOR	8		Z01-06-06-0
9.	60" ST/90 3/8" D/W HOSE	4		Z38-R2-60-S
10.	84" ST/90 1/2" S/W HOSE	1		Z12-R1-84-S
11.	1/2" x 1/2" ADAPTOR	3		Z01-06-08-0
12.	1/2" MALE END Q/R COUPLING	2		Z01-15-081
13.	3/8" x 3/8" BULK HEAD ADAPTOR	2		Z01-05-06-01
14.	84" ST/90 3/8" D/W HOSE	2		Z38-R2-84-S
15.	72" ST/90 3/8" D/W HOSE	1		Z38-R2-72-S

TANCO AUTOWRAP 1991

INDEXING QUADRANT ASSY (50% OVERLAP WITH 500mm WIDE FILM ROLL)

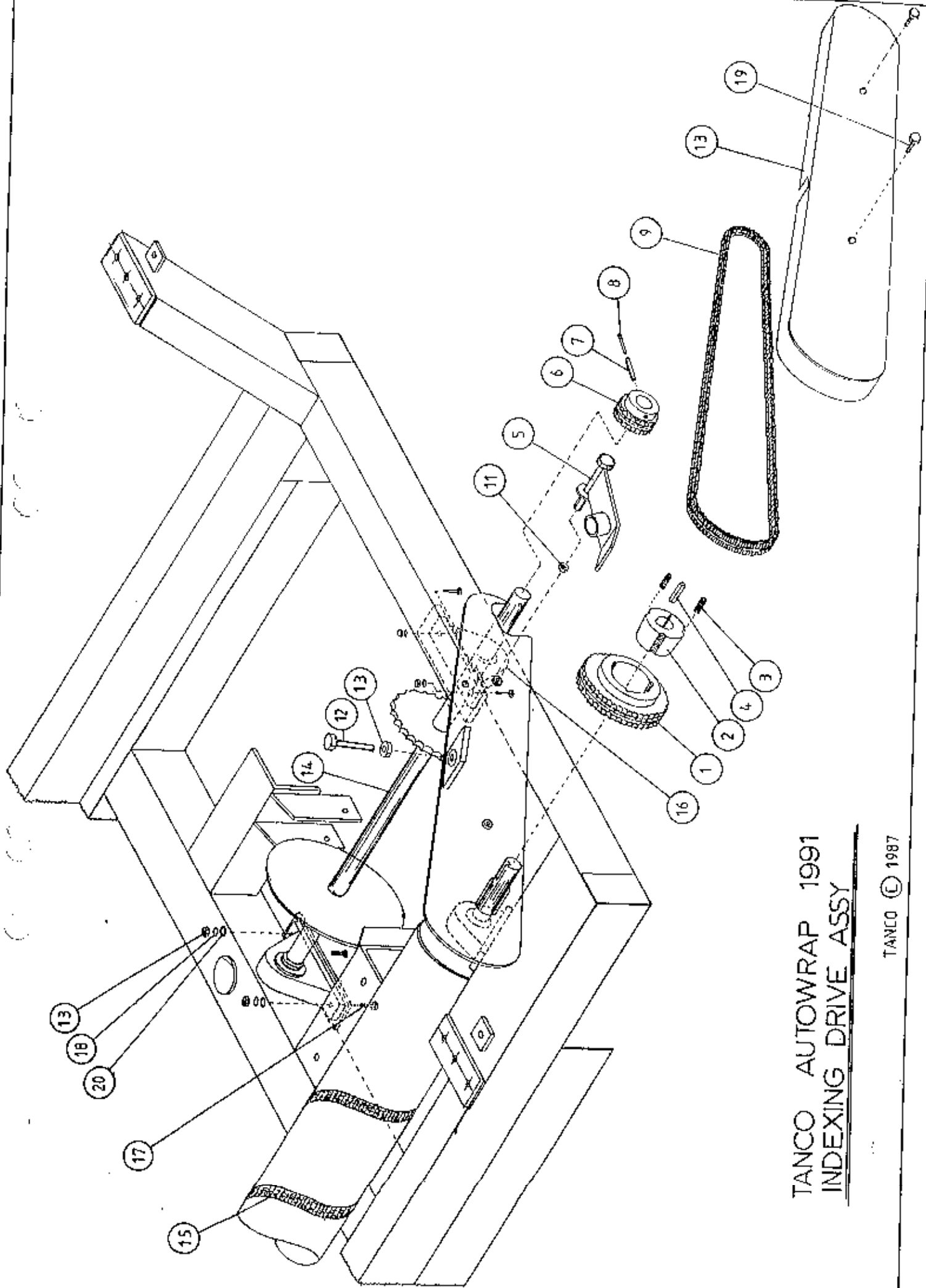


TANCO AUTOWRAP 1991

PARTS LIST

INDEXING QUADRANT ASSEMBLY (50% OVERLAP WITH 50MM WIDE FILM ROLL)

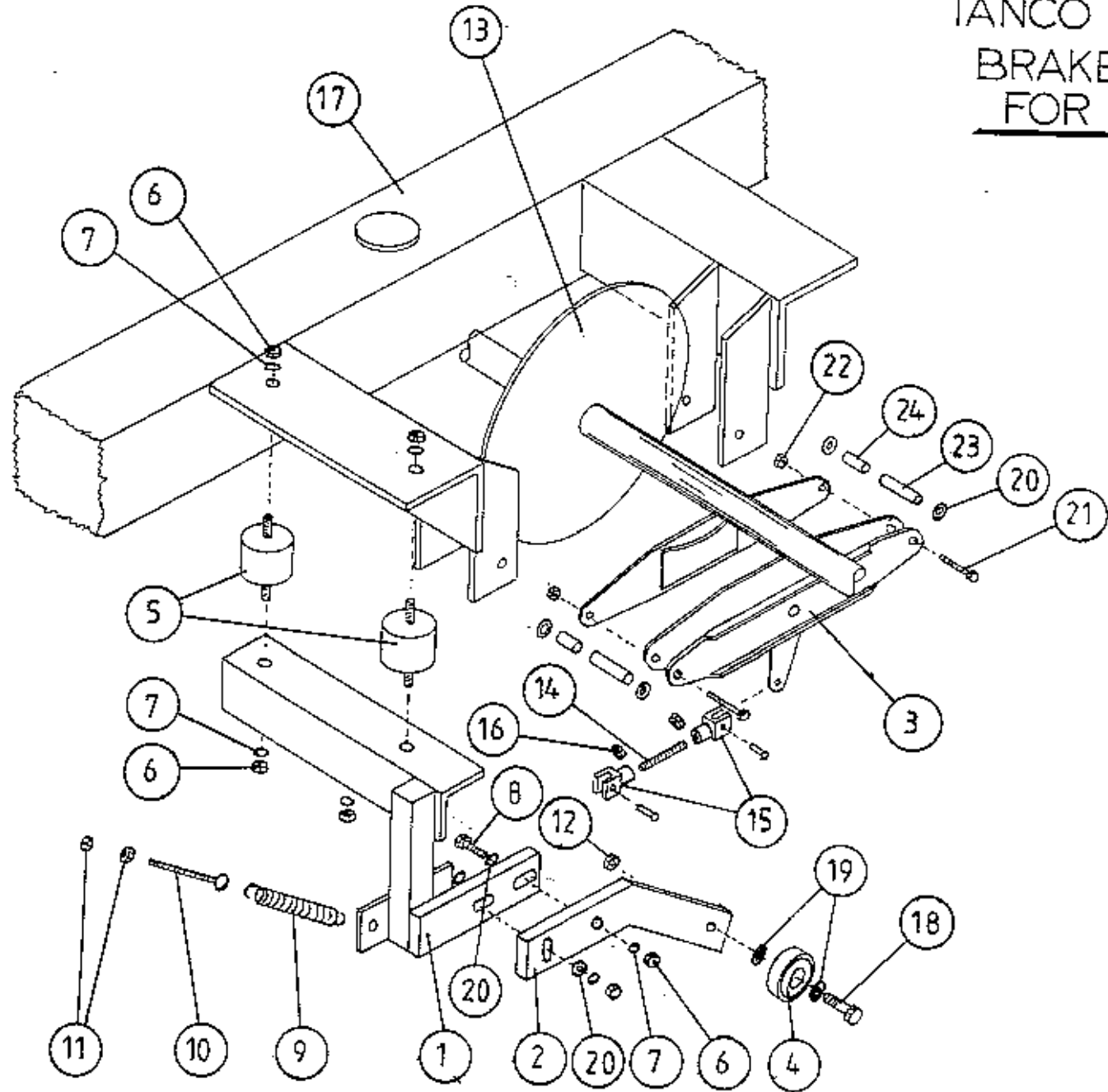
<u>ITEM NO.</u>	<u>DESCRIPTION</u>	<u>QTY.</u>	<u>PART NO.</u>	<u>CODE NO.</u>
1.	TIPPING FRAME ASSY.	1	B/R 101 A	
2.	QUADRANT ASSY.	1	B/R 160 A	
3.	3/4" DIA CAM FOLLOWER (HEAVY DUTY) C/W GREASE NIPPLE	16		206-425
4.	10mm DIA FLAT WASHERS	4		211-02-10
5.	3/8" UNF LOCKNUTS (BINX)	16		220-12
6.	RUBBER BUFFER 100mm DIA x 40mm LONG	4		240-22
7.	16mm DIA FLAT WASHERS	20		210-02-16
8.	16mm DIA SPRING WASHERS	8		212-02-16
9.	M16 HEX NUT	8		218-16
10.	RUBBER BUFFER 50mm DIA x 25mm LONG	2		240-23
11.	CAM ASSY	2	B/R 164 A	
12.	M10 HEX HD SET x 30mm LONG	4		226-062S
13.	M10 HEX NUT	8		218-10
14.	10mm DIA SPRING WASHER	20		212-02-10
15.	PACKER	4	B/R 184	XPAW



TANCO AUTOWRAP 1991
INDEXING DRIVE ASSY

TANCO © 1987

TANCO AUTOWRAP 1991
BRAKE ARRANGEMENT
FOR INDEXING SHAFT

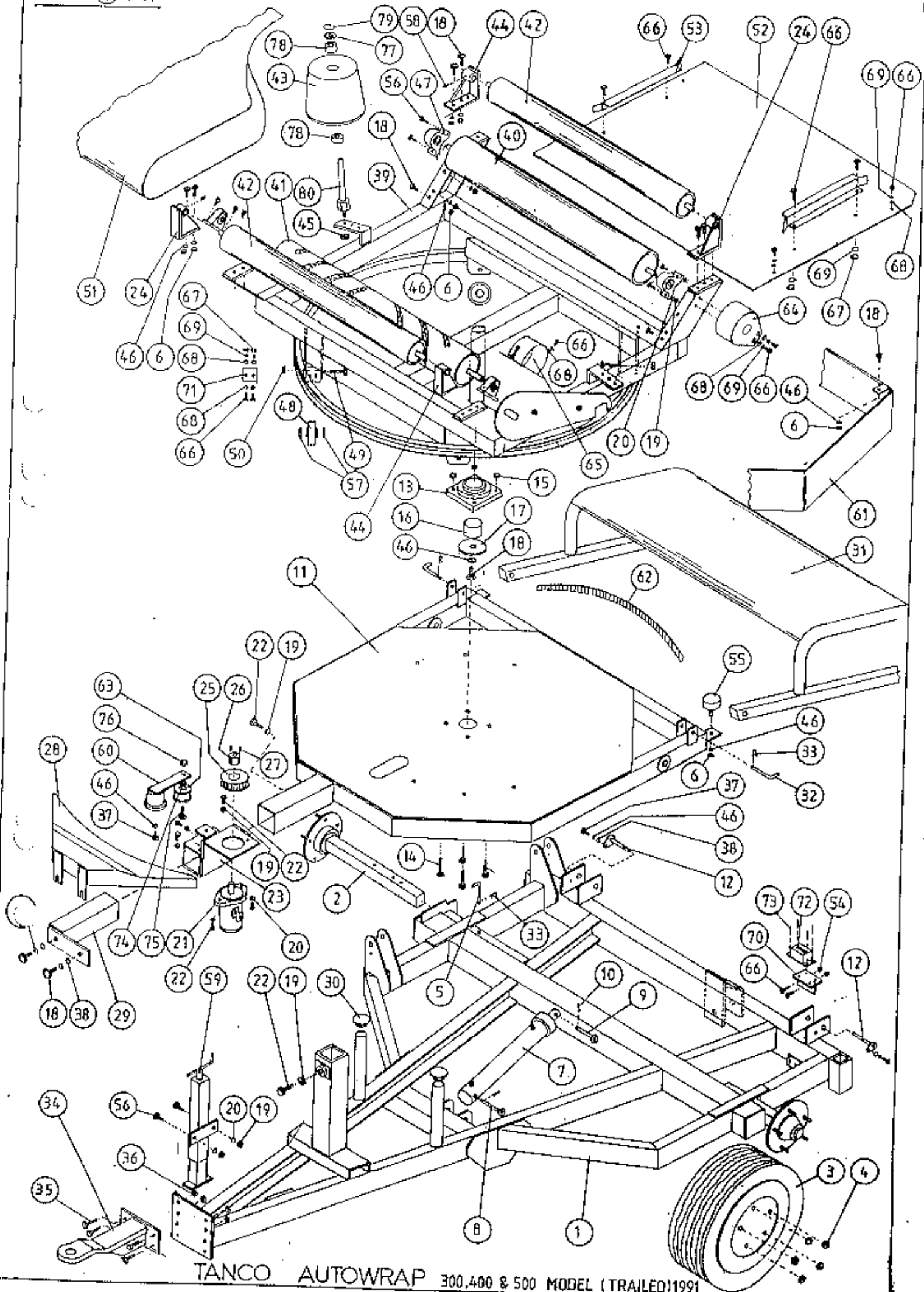


TANCO AUTOWRAP 1991

BRAKE ARRANGEMENT FOR INDEXING SHAFT

PARTS LIST

<u>ITEM NO.</u>	<u>DESCRIPTION</u>	<u>QTY.</u>	<u>PART NO.</u>	<u>CODE NO.</u>
1.	CAM FOLLOWER MOUNTING BRACKET (UPPER)	1	B/R 169 A	
2.	CAM FOLLOWER MOUNTING BRACKET (LOWER)	1	B/R 170	
3.	CALIPER DISC BRAKE UNIT	1		249-02
4.	HALL BEARING (6301)	1		206-43
5.	RUBBER BUFFER 50mm DIA x 30 LONG TYPE A 57 SHORE	2		240-21
6.	M10 HEX NUTS	6		218-10
7.	10mm DIA SPRING WASHERS	6		212-02-10
8.	M10 HEX HD SET x 40 LONG	2		226-0648
9.	TENSION SPRING	1	J-24	207-05
10.	EYE BOLT (M8)	1	B/R 172 A	
11.	M8 HEX NUTS	2		218-08
12.	M12 LOCKNUT	1		223-12
13.	SPROCKET/SHAFT ASSY	1	B/R 166 A	
14.	5/16" UNF THREADED BAR x 90mm LONG	1		
15.	5/16" UNF CLEVIS C/W PIN & CLIP	2		249-33
16.	5/16" UNF HEX NUT	2		215-05
17.	TURN TABLE	1	B/R 102 A	
18.	M12 HEX HD. SETS x 40mm LONG	1		226-0845
19.	12mm DIA FLAT WASHER	2		211-02-12
20.	10mm DIA FLAT WASHER	7		211-02-10
21.	3/8" UNF HEX HD. BOLT x 3" LONG	2		231B-102
22.	3/8" UNF LOCK NUT	2		215-06
23.	SPACER 1/2" O.D. x 13/32" I.D. x 1 1/2" LONG	2		
24.	SPACER 1/2" O.D. x 13/32" I.D. x 1/2" LONG	2		



TANCO AUTOWRAP 300,400 & 500 MODEL (TRAILED)1991

TANCO AUTOWRAP 300, 400 & 500 MODEL (TRAILER) 1991

PARTS LIST

<u>ITEM NO.</u>	<u>DESCRIPTION</u>	<u>QTY.</u>	<u>PART NO.</u>	<u>CODE NO.</u>
1.	CHASSIS ASSY	1	B/R 100 A	
2.	STUB AXLE (ADJUSTABLE)	1		204-033
3.	WHEELS	2		204-03
4.	WHEEL NUTS	10		204-0331
5.	BISSEL PIN	1	B/R 176	203-22-AW82
6.	M10 HEX NUT	18		218-10
7.	HYD. RAM	1		201-01-AR65
8.	RAM BOTTOM PIVOT PIN	1	B/T 330	203-03-330
9.	RAM TOP PIVOT PIN	1	J-71-50	203-03-50
10.	2" X 1/4" SPLIT PIN	2		203-21-29
11.	TIPPING FRAME ASSY.	1	B/R 101 A	
12.	TIPPING FRAME PIVOT PIN C/W GREASE NIPPLE	2	905/968	203-01-905 239-60
13.	2" DIA FLANGE BEARING	1		206-49
14.	5/8" UNF HEX HD. SET x 2" LONG	4		230B-064
15.	5/8" UNF LOCKNUTS	4		220-10
16.	SPACER	1	B/R 277	WD60-705
17.	RETAINING COLLAR	1	B/R 276	
18.	M10 HEX HD SET x 30mm LONG	19		226-0628
19.	M12 HEX NUT	15		218-12
20.	12mm DIA SPRING WASHER	12		212-02-12
21.	HYD. MOTOR C.L.	1		201-02-AR75
22.	M12 HEX HD SETS x 30mm LONG	7		226-0828
23.	HYD. MOTOR MOUNTING ASSY.	1	B/R 103 A	
24.	ROLLER MOUNTING BRACKET	2	B/R 228 A	
25.	4"DIA x 1/2" PITCH TOOTHED PULLEY	1		209-005-AW1
26.	TAPER LOCK BUSH TO SUIT 1" DIA SHAFT	1		209-005-AW2
27.	M10 STUDS X 15mm	2		228-01
28.	HYD. MOTOR GUARD ASSY	1	B/R 237 A	
29.	HYDRAULIC MOTOR GUARD MOUNTING BRACKET	1	B/R 236 A	
30.	PLASTIC CAP	2		232-08
31.	RALE RAMP ASSY	1	B/R 123 A	
32.	BISSEL PIN	2	T/L162	203-22-AW10
33.	4mm "R" CLIP	3		236-02

TANCO AUTOWRAP 300, 400 & 500 MODEL (TRAILED) 1991

PARTS LIST

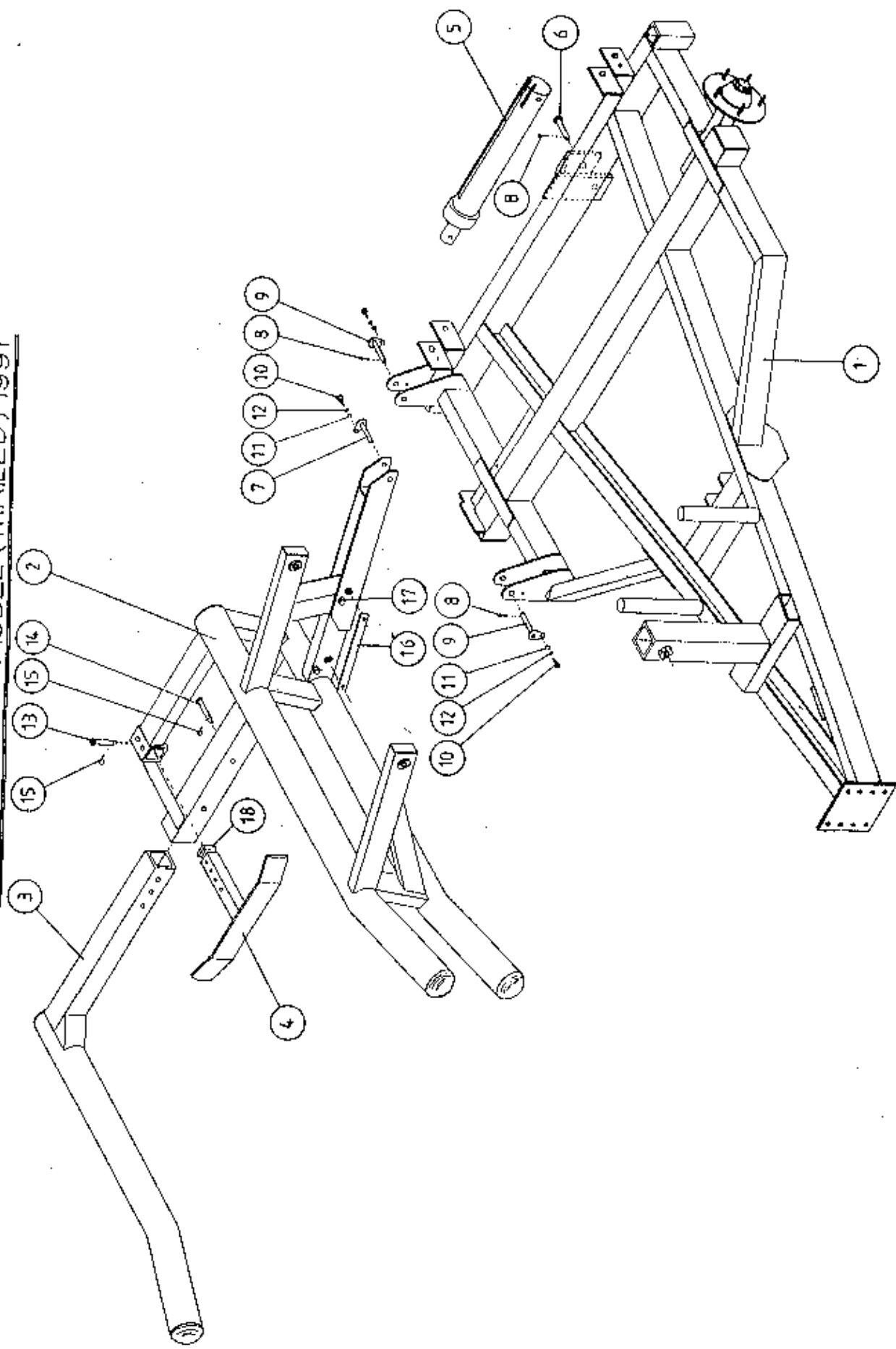
<u>ITEM NO.</u>	<u>DESCRIPTION</u>	<u>QTY.</u>	<u>PART NO.</u>	<u>CODE NO.</u>
34.	HITCH ASSY.	1	B/R 227 A	
35.	M16 HEX HD. SET x 45mm LONG	4		Z26-123E
36.	M16 LOCKNUTS	4		Z23-16
37.	M10 HEX HD. SET x 25mm LONG (TUFLOCK)	3		Z26S-061
38.	10mm DIA MACHINED FLAT WASHER	4		Z11-02-10
39.	TURN TABLE ASSY.	1	B/R 102 A	
40.	BIG ROLLER ASSY IDLER	1	B/R 104 A	
41.	BIG ROLLER ASSY. DRIVER	1	B/R 105 A	
42.	SMALL ROLLER ASSY.	2	B/R 106 A	
43.	SIDE ROLLER	2	B/R 282	
44.	ROLLER MTG. BRACKET	2	B/R 229 A	
45.	3/4" U.N.F. LOCKNUT	2		Z20-12
46.	10mm DIA SPRING WASHERS	24		Z12-02-10
47.	1" PILLOW BLOCK BEARING C/W CAM LOCK COLLAR	4		Z06-47
48.	SUPPORT WHEELS (4" DIA)	4		Z06-466
49.	AXLE ASSY. C/W GREASE NIPPLE	4	B/R 192	Z03-22-AW/AX Z39-60
50.	M20 LOCKNUTS	4		Z23-20
51.	1 METER WIDE x 89 1/2" LONG x 1/4" FLAT BELT	1		Z05-02-AWV
52.	TURN TABLE COVER PLATE	1	B/R 114	
53.	BELT GUIDE ASSY.	2	B/R 115 A	
54.	M8 LOCKNUTS	2		Z23-06
55.	BUFFER 50mm DIA x 40mm LONG	2		Z40-20
56.	M12 HEX HD. SETS x 40mm LONG	10		Z26S-084
57.	SPACER	8	B/R 198	WD60-198
58.	1/8" B.S.P. ST GREASE NIPPLE	4		Z39-60
59.	SCREW JACK ASSEMBLY	1	B/R 130 A	
60.	ROSTA TENSIONING UNIT ARM	1		Z06-454
61.	MAIN GUARD ASSY.	1	B/R 244 A	
62.	170" LONG x 1/2 PITCH x 1" WIDE TOOTHED BELT	1		Z05-02-AW2
63.	STEPPED ROLLER C/W BEARINGS	1	B/R 226	Z06-455

TANCO AUTOWRAP 300, 400 & 500 MODEL (TRAILED) 1991

PARTS LIST

<u>ITEM NO.</u>	<u>DESCRIPTION</u>	<u>QTY.</u>	<u>PART NO.</u>	<u>CODE NO.</u>
64.	GRASS GUARD (CLOSED TYPE)	3	B/R 182 A	Z49-98
65.	GRASS GUARD (OPEN TYPE)	1	B/R 183 A	Z49-981
66.	M8 HEX HD SETS x 20mm LONG	22		Z26-0398
67.	M8 HEX NUTS	14		Z18-08
68.	8mm DIA FLAT WASHERS (MOD FLAP)	20		Z11-02-031
69.	8mm DIA SPRING WASHERS	20		Z12-02-06
70.	COUNTER MOUNTING BRACKETS	1	B/R 196 A	
71.	SCRAPER	2	B/R 191	
72.	COUNTER (RE-SETTABLE TYPE)	1		Z49-911
73.	3mm DIA POP RIVET	4		Z03-25-03
74.	SPACER	1	B/R 235	
75.	M10 HEX HD BOLT x 60mm LONG	1		Z26-0678
76.	M10 LOCKNUT	1		Z23-10
77.	THRUST WASHER	2	B/R 284	Z11-02-205
78.	BEARING (25mm I.D.)	4		
79.	CIRCLIP	2		Z29-75
80.	ROLLER SHAFT ASSEMBLY	2	B/R 283	

TANCO AUTOWRAP LIFT ARM & CHASSIS
 300 400 & 500 MODEL (TRAILED) 1991



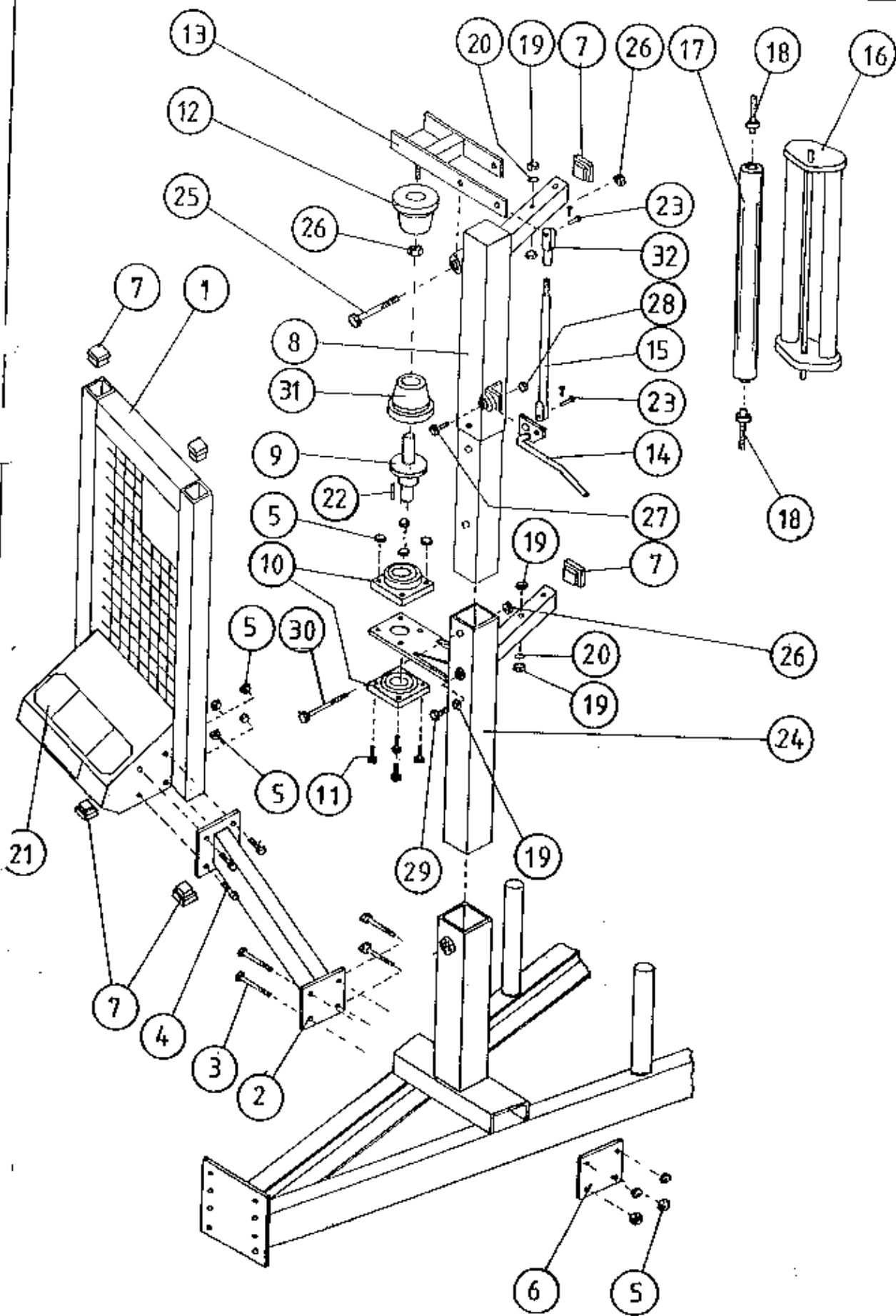
TANCO AUTOWRAP 300, 400 & 500 MODEL (TRAILED 1991

PARTS LIST

LIFT ARM AND CHASSIS

<u>ITEM NO.</u>	<u>DESCRIPTION</u>	<u>QTY.</u>	<u>PART NO.</u>	<u>CODE NO.</u>
1.	CHASSIS ASSEMBLY	1	B/R 100 A	
2.	LIFT ARM ASSEMBLY	1	B/R 140 A	
3.	ADJUSTABLE OUTER ARM ASSY.	1	B/R 152 A	
4.	ADJUSTABLE BALE STOP	1	B/R 153 A	
5.	HYDRAULIC RAM (LIFT ARM)	1	27	Z01-01-AW
6.	RAM BOTTOM PIVOT PIN	1	B/T 330 A	Z03-02-330
7.	RAM TOP PIVOT PIN	1	797/968	Z03-01-797
8.	2" x 1/4" SPLIT PINS	3		Z03-21-29
9.	LIFT ARM PIVOT C/W GREASE NUTPLE	2	905/968	Z03-01-905
10.	M10 HEX HD SET x 25mm LONG (TUFLOCK)	3		Z268-061
11.	10mm DIA MACHINED FLAT WASHER	3		Z11-02-10
12.	10mm DIA SPRING WASHER	3		Z12-02-10
13.	SPAREX PIN	1	S73	Z03-04-73
14.	SPAREX PIN	1	S77	Z03-04-77
15.	7/16" DIA LINCH PINS	2		Z03-22-06
16.	SAFETY SUPPORT BAR	1	B/R 165	
17.	6mm DIA LINCH PIN	2		Z03-22-03
18.	PLASTIC CAP	1		Z32-10

TANCO AUTOWRAP 300 MODEL (TRAILED) 1991 CONTROL CONSOLE & FILM DISPENSING SYSTEM

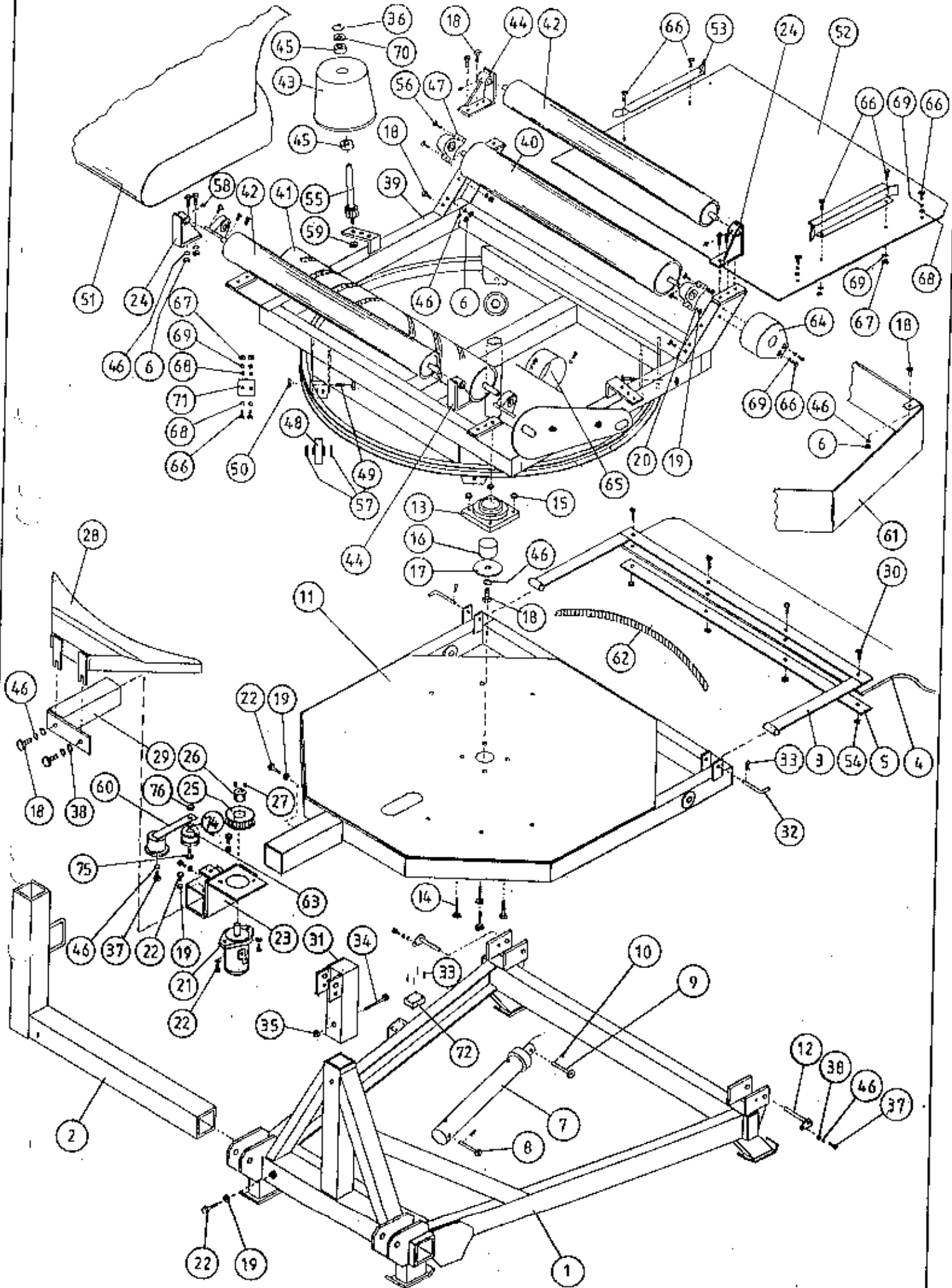


TANCO AUTOWRAP 300 MODEL (TRAINED) 1991

CONTROL CONSOLE & FILM DISPENSING SYSTEM

PARTS LIST

<u>ITEM NO.</u>	<u>DESCRIPTION</u>	<u>QTY.</u>	<u>PART NO.</u>	<u>CODE NO.</u>
1.	CONTROL PANEL/GUARD ASSY.	1	B/R 155 A	
2.	CONTROL PANEL GUARD MOUNTING ARM	1	B/R 156 A	
3.	M10 HEX HD BOLT x 130mm LONG	4		226-072B
4.	M10 HEX HD SET x 30mm LONG	4		226-062G
5.	M10 LOCKNUTS	12		223-10
6.	CLAMPING PLATE	1	B/R 163	
7.	PLASTIC CAPS (70 SUIT 40 x 40 x 3 RHS)	6		232-07
8.	DISPENSER MOUNTING (UPPER)	1	B/R 221 A	
9.	FILM SPOOL ASSEMBLY	1	B/R 225 A	
10.	1" DIA FLANGE BEARING	2		206-48
11.	M10 HEX HD. BOLT x 50mm LONG	4		226-066B
12.	CONE (TOP) C/W BALL BEARINGS	1	B/R 233	
13.	CLAMP ASSEMBLY	1	B/R 223 A	
14.	LEVER ASSEMBLY	1	B/R 222 A	
15.	LINK ASSEMBLY	1	B/R 224 A	
16.	FILM DISPENSER UNIT MK 6	1		0613
17.	SLAVE ROLLER ASSY (PLASTIC COATED)	1	B/R 134 A	
18.	SLAVE ROLLER PIVOT	2	B/R 135	
19.	M12 HEX NUTS	5		218-12
20.	12mm DIA SPRING WASHER	2		212-02-12
21.	SAFETY/INSTRUCTION STICKER	1	TA057	
22.	1/4" DIA TENSION PIN x 3/4" LONG	1		203-20-062
23.	PIN (5/16" DIA) C/W CLIP	2		249-337
24.	DISPENSER MOUNTING (LOWER)	1	B/R 219 A	
25.	M12 HEX HD BOLT x 130mm LONG	1		226-094B
26.	M12 LOCKNUT	3		223-12
27.	M8 HEX HD BOLT x 35mm LONG	1		226-042S
28.	M8 LOCKNUT	1		223-08
29.	M12 HEX HD SET x 30mm LONG	1		226-082S
30.	M12 HEX HD BOLT x 100mm LONG	1		226-092B
31.	CONE (BOTTOM)	1	B/R 234	
32.	CLEVIS (M10)	1	B/R 248	



TANCO AUTOWRAP 200 MODEL (3pt. LINKAGE) 1991

TANCO AUTOWRAP 200 MODEL (3pt. LINKAGE) 1991

PARTS LIST

<u>ITEM NO.</u>	<u>DESCRIPTION</u>	<u>QTY.</u>	<u>PART NO.</u>	<u>CODE NO.</u>
1.	3pt. LINKAGE FRAME ASSEMBLY	1	B/R 208 A	
2.	DISPENSER BRACKET LOWER SUPPORT	1	B/R 203 A	
3.	RUBBER MAT MOUNTING FRAME ASSEMBLY	1	B/R 205 A	
4.	RUBBER MAT	1	B/R 207	
5.	CLAMPING PLATE	1	R/R 206	
6.	M10 HEX NUT	16		Z18-10
7.	HYD. RAM	1		Z01-01-AR687
8.	RAM BOTTOM PIVOT PIN	1	R/T 330	Z03-02-330
9.	RAM TOP PIVOT PIN	1	J-71-50	Z03-03-50
10.	2" X 1/4" SPLIT PIN	2		Z03-21-29
11.	TIPPING FRAME ASSY.	1	B/R 101 A	
12.	TIPPING FRAME PIVOT PIN C/W GREASE NIPPLE	2	905/968	Z03-01-905 Z39-60
13.	2" DIA FLANGE BEARING	1		Z06-49
14.	5/8" UNF HEX HD.SET x 2" LONG	4		Z30B-064
15.	5/8" UNF LOCKNUTS	4		Z20-10
16.	SPACER	1	B/R 277	WD60-705
17.	RETAINING COLLAR	1	B/R 276	
18.	M10 HEX HD SET x 30mm LONG	19		Z26-062S
19.	M12 HEX NUT	13		Z18-12
20.	12mm DIA SPRING WASHER	10		Z12-02-12
21.	HYD.MOTOR C.L.	1		Z01-02-AR75
22.	M12 HEX HD SETS x 30mm LONG	7		Z26-082S
23.	HYD. MOTOR MOUNTING ASSY.	1	B/R 103 A	
24.	ROLLER MOUNTING BRACKET	2	B/R 228 A	
25.	4"DIA x 1/2" PITCH TOOTHED PULLEY	1		Z09-005-AW1
26.	TAPER LOCK BUSH TO SUIT 1" DIA SHAFT	1		Z09-005-AW2
27.	M10 STUDS x 15mm	2		Z28-01
28.	HYD. MOTOR GUARD ASSY	1	B/R 237 A	
29.	HYDRAULIC MOTOR GUARD MOUNTING BRACKET	1	B/R 236 A	
30.	M8 HEX HD SET x 25mm LONG	4		Z26-0405
31.	TOP LINK BRACKET ASSEMBLY	1	B/R 246 A	
32.	BISSEL PIN	2	T/L162	Z03-22-AW100
33.	4mm "R" CLIP	2		Z36-02

TANCO AUTOWRAP 200 MODEL (3pt. LINKAGE) 1991

PARTS LIST

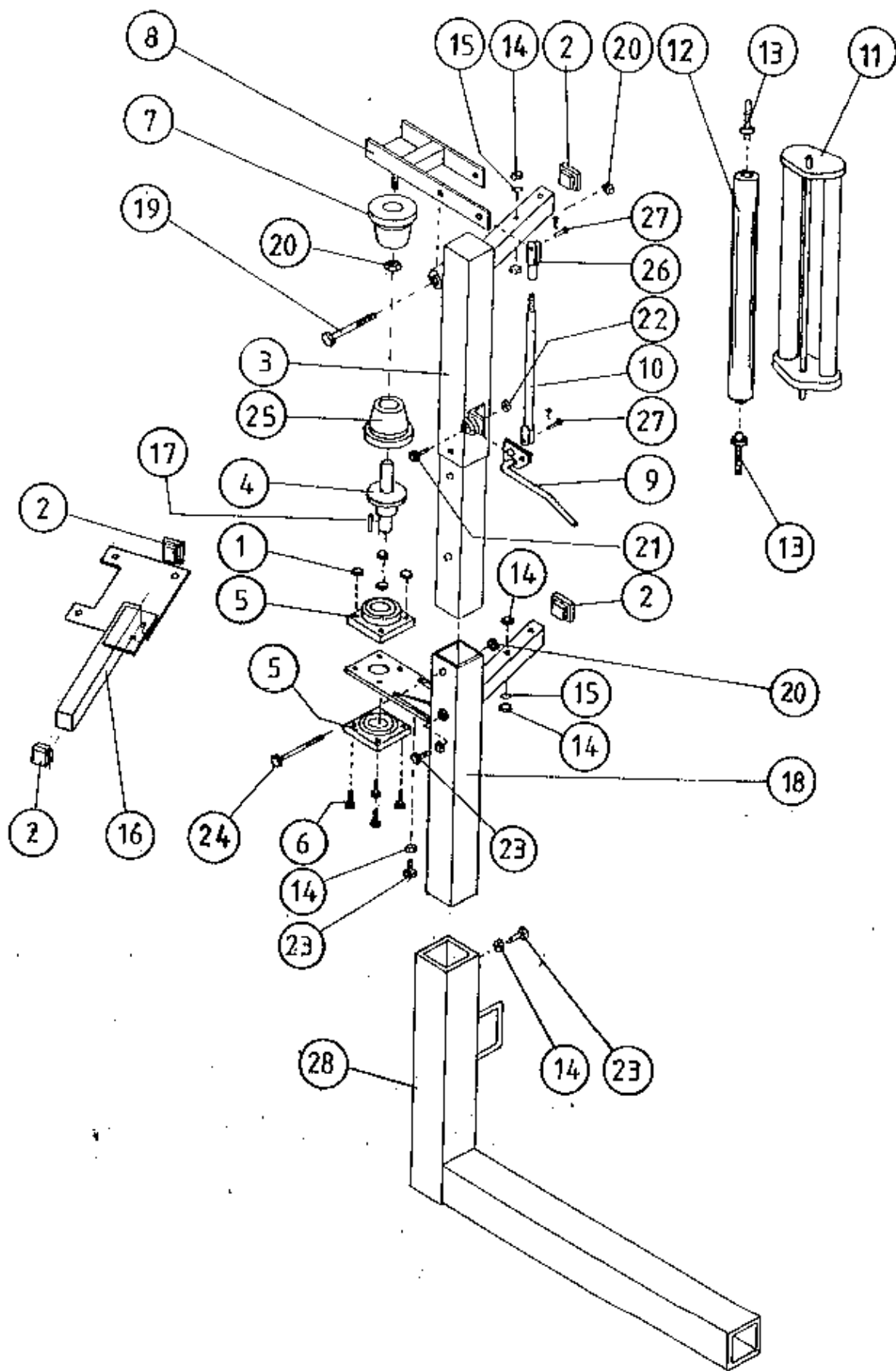
<u>ITEM NO.</u>	<u>DESCRIPTION</u>	<u>QTY.</u>	<u>PART NO.</u>	<u>CODE NO.</u>
34.	M16 HEX HD BOLT x 120mm LONG	1		Z26-134B
35.	M16 LOCKNUTS	1		Z23-16
36.	CIRCLIP	2		Z29-75
37.	M10 HEX HD. SET x 25mm LONG (TOPLOCK)	3		Z26S-061
38.	10mm DIA MACHINED FLAT WASHER	4		Z11-02-10
39.	TURN TABLE ASSY.	1	B/R 102 A	
40.	BIG ROLLER ASSY IDLER	1	B/R 104 A	
41.	BIG ROLLER ASSY. DRIVER	1	B/R 105 A	
42.	SMALL ROLLER ASSY.	2	B/R 106 A	
43.	SIDE ROLLER	2	B/R 2B2	
44.	ROLLER MTG. BRACKET	2	B/R 229 A	
45.	BEARING (25mm I.D.)	4		
46.	10mm DIA SPRING WASHERS	22		Z12-02-10
47.	1" PILLOW BLOCK BEARING C/W CAM LOCK COLLAR	4		Z06-47
48.	SUPPORT WHEELS (4" DIA)	4		Z06-466
49.	AXLE ASSY. C/W GREASE NIPPLE	4	B/R 192	Z03-22-AW/A: Z39-60
50.	M20 LOCKNUTS	4		Z23-20
51.	1 METER WIDE x 89 1/2" LONG x 1/4" FLAT BELT	1		Z05-02-AWV
52.	TURN TABLE COVER PLATE	1	B/R 114	
53.	BELT GUIDE ASSY.	2	B/R 115 A	
54.	M8 LOCKNUTS	4		Z23-06
55.	ROLLER SHAFT ASSEMBLY	2	B/R 2B3	
56.	M12 HEX HD. SETS x 40mm LONG	8		Z26S-084
57.	SPACER	8	B/R 198	WD60-198
58.	1/8" B.S.P. ST GREASE NIPPLE	4		Z39-60
59.	3/4" U.N.F. LOCKNUT	2		Z20-12
60.	ROSTA TENSIONING UNIT ARM	3		Z06-454
61.	MAIN GUARD ASSY.	1	B/R 244 A	
62.	170" LONG x 1/2 PITCH x 1" WIDE TOOTHED BELT	1		Z05-02-AW2
63.	STEPPED ROLLER C/W BEARINGS	1	B/R 226	Z06-455

TANCO AUTOWRAP 200 MODEL (3pt. LINKAGE) 1991

PARTS LIST

<u>ITEM NO.</u>	<u>DESCRIPTION</u>	<u>QTY.</u>	<u>PART NO.</u>	<u>CODE NO.</u>
64.	GRASS GUARD (CLOSED TYPE)	3	B/R 182 A	Z49-98
65.	GRASS GUARD (OPEN TYPE)	1	B/R 183 A	Z49-98L
66.	M8 HEX HD SETS x 20mm LONG	20		Z26-039G
67.	M8 HEX NUTS	14		Z18-08
68.	8mm DIA FLAT WASHERS (MUD FLAP)	20		Z11-02-081
69.	8mm DIA SPRING WASHERS	20		Z12-02-08
70.	THRUST WASHER	2	B/R 284	Z11-02-205
71.	SCRAPER	2	B/R 191	
72.	COUNTER (RE-SETTABLE TYPE)	1		Z49-911
73.	3mm DIA POP RIVET	4		Z03-25-03
74.	SPACER	1	B/R 235	
75.	M10 HEX HD BOLT x 60mm LONG	1		Z26-047B
76.	M10 LOCKNUT	1		Z23-10

TANCO AUTOWRAP 200 MODEL 3PT. LINKAGE 1991 FILM DISPENSING SYSTEM



TANCO AUTOWRAP 200 MODEL. (3 PT. LINKAGE) 1991

FILM DISPENSING SYSTEM

PARTS LIST

<u>ITEM NO.</u>	<u>DESCRIPTION</u>	<u>QTY.</u>	<u>PART NO.</u>	<u>CODE NO.</u>
1.	M10 LOCKNUTS	4		Z23-10
2.	PLASTIC CAPS (TO SUIT 40 x 40 x 3 RHS)	4		Z32-07
3.	DISPENSER MOUNTING (UPPER)	1	B/R 221 A	
4.	FILM SPOOL ASSEMBLY	1	B/R 225 A	
5.	1" DIA FLANGE BEARING	2		Z06-48
6.	M10 HEX HD. BOLT x 50mm LONG	4		Z26-066B
7.	CONE (TOP) C/W BALL BEARINGS	1	B/R 233	
8.	CLAMP ASSEMBLY	1	B/R 223 A	
9.	LEVER ASSEMBLY	1	B/R 222 A	
10.	LINK ASSEMBLY	1	B/R 224 A	
11.	FILM DISPENSER UNIT MK 6	1		D613
12.	SLAVE ROLLER ASSY (PLASTIC COATED)	1	B/R 134 A	
13.	SLAVE ROLLER PIVOT	2	B/R 135	
14.	M12 HEX NUTS	7		Z18-12
15.	12mm DIA SPRING WASHER	2		Z12-02-12
16.	SPOOL VALVE MOUNTING PLATE ASSEMBLY	1	B/R 214 A	
17.	1/4" DIA TENSION PIN x 3/4" LONG	1		Z03-20-062
18.	DISPENSER MOUNTING (LOWER)	1	B/R 219 A	
19.	M12 HEX HD BOLT x 130mm LONG	1		Z26-094B
20.	M12 LOCKNUT	3		Z23-12
21.	M8 HEX HD BOLT x 35mm LONG	1		Z26-042S
22.	M8 LOCKNUT	1		Z23-08
23.	M12 HEX HD SET x 30mm LONG	3		Z26-082S
24.	M12 HEX HD BOLT x 100mm LONG	1		Z26-092B
25.	CONE (BOTTOM)	1	B/R 234	
26.	CLEVIS (M10)	1	B/R 248	
27.	PIN (5/16" DIA) C/W CLIP	2		Z49-337
28.	DISPENSER BRACKET LOWER SUPPORT	1	B/R 203 A	